



Australia's #1 For Truck and Fleet Rental

# TRUCK & VEHICLE RENTAL

CST Hire Is Australia's leading supplier of off-road site specific light vehicles buses and trucks. With site-ready solutions for projects of any scale or type. Our fleet is designed for versatility, safety, and performance, ensuring you have the right vehicle for your project.



Light Vehicles



Buses



Flatbed Trucks



Fitters Trucks



Crew Truck



Crane Trucks



Crane / Tilt Trucks



Fuel Truck



Service Trucks



Tilt Tray Trucks



Tipper Truck



Water Trucks



Semi Water Tanker

With Trucks for all Industries, we have you covered...



Water



Solar



Power



Wind Farms



Rail



Civil Construction



Gas Pipelines



Other Construction

2024 - 2025

1300 942 342

[www.csthire.com.au](http://www.csthire.com.au)

[Sales@csthire.com.au](mailto:Sales@csthire.com.au)

# ABOUT US

## WHAT WE DO

CST Hire offers a comprehensive range of project-specific trucks, purpose-built to withstand the demanding conditions of Australian construction and mining environments. Our focus on effectiveness, safety, and flexibility ensures the CST fleet is the ideal solution for your next project, delivering performance you can rely on.

## FIELD SERVICING

CST Hire offers tailored onsite field servicing for projects of all sizes. Our fully equipped field mechanics can remain on-site for ongoing maintenance or visit as needed, to keep your fleet operational and your project moving without delays.



6x4 Crane Trucks with ROPS on Site in Central QLD

## REACH

We provide nationwide coverage with a service network that's second to none.

By partnering with CST Hire, you gain access to one of Australia's largest privately owned support networks, ensuring your project stays on schedule and within budget.

## FLEET FLEXIBILITY

Whether you need one truck or one hundred, CST Hire offers flexible rental options to suit projects of any scale or complexity.

We handle the fleet management, so you can focus on your project and minimise fleet downtime.



Project Spec 6x4 Service Truck on Site in WA

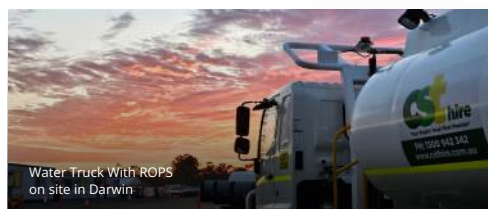
## MINING & CONSTRUCTION TRUCK RENTALS

Our extensive range of vehicles is designed to meet the diverse needs of infrastructure projects, construction, and mining. If we don't have what you need, we'll source it for you.

We are here to help you select the right trucks and equipment for your project's specific requirements. Customer satisfaction is at the heart of everything we do — it's why Customers choose CST Hire time and time again.



Service Bay - CST Hire Larapinta QLD



Water Truck With ROPS on site in Darwin



Light Vehicle on pipeline project in north QLD



CST Hire - Larapinta QLD

# FLEET GUIDE

Explore our comprehensive range of project-spec vehicles designed for efficiency, safety, and reliability across Australia's most demanding industries.



Light Vehicles & Buses	3
Flatbed Trucks	5
Fitters Trucks	6
Crew Trucks	6
Crane Trucks	7
Crane / Tilt Truck Combos	10
Fuel Trucks	11
Service Trucks	12
Tilt Trays	13
Tippers	14
Water Trucks	15

This guide outlines detailed specifications, including payload capacities, tray sizes, crane capabilities, and additional features, allowing you to make informed decisions that optimize your operations. From heavy-duty crane trucks to versatile utility vehicles, our fleet is maintained to the highest standards to keep your projects moving without delays.

Explore the full range and find the perfect fit for your next project.



# LIGHT VEHICLES & BUSES



CST Hire's light vehicles and project buses are purpose-built for workforce mobility, offering mine-spec safety, comfort, and reliability across remote and demanding worksites.

● Safer Together Compliant

● Light Vehicle Project Spec

● Heavy Vehicle Project Spec



ISUZU D-Max

TOYOTA Hilux

## 4X4 DUAL CAB TRAY BACK UTE

- 5 seats
- UHF radio
- High-visibility tape
- Battery isolator
- Bull bar and snorkel
- Seat covers
- First aid kit and fire extinguisher
- Elevated lights with beacon and reverse alarm
- Wheel nut indicators
- Car Licence Required



TOYOTA Landcruiser

## 4X4 SINGLE CAB LANDCRUISER UTE

- 3 seats
- UHF radio
- High-visibility tape
- Battery isolator
- Bull bar and snorkel
- Seat covers
- First aid kit and fire extinguisher
- Elevated lights with beacon and reverse alarm
- Wheel nut indicators
- Car Licence Required



TOYOTA Landcruiser

## 4X4 DUAL CAB LANDCRUISER UTE

- 5 seats
- UHF radio
- High-visibility tape
- Battery isolator
- Bull bar and snorkel
- Seat covers
- First aid kit and fire extinguisher
- Elevated lights with beacon and reverse alarm
- Wheel nut indicators
- Car Licence Required



TOYOTA Prado GX/GXL

## 4X4 WAGON

- 5 seats
- UHF radio
- High-visibility tape
- Battery isolator
- Bull bar and snorkel
- Seat covers
- First aid kit and fire extinguisher
- Elevated lights with beacon and reverse alarm
- Wheel nut indicators
- Car Licence Required



TOYOTA Coaster

## 4X2 PROJECT BUS

- 21 seats
- High-visibility tape
- Bull bar
- Seat covers
- Vehicle stability control
- Light Rigid Licence Required



TOYOTA Hiace Commuter

## 4X2 PROJECT BUS

- 12 seats
- High-visibility tape
- Bull bar and snorkel
- Seat covers
- Vehicle stability control
- Car Licence Required



TOYOTA Hiace

## 4X4 PROJECT BUS

- 12 seats
- High-visibility tape
- Bull bar
- Seat covers
- Wheel nut indicators
- Vehicle stability control
- Car Licence Required



ISUZU NPS

## 4X4 PROJECT BUS – COACH BODY

- 18-20 seats
- High-visibility tape
- Bull bar
- Seat covers
- Internal ROPS<sup>2</sup>
- Light Rigid Licence Required



TOYOTA Coaster

## 4X4 PROJECT BUS

- 22 seats
- High-visibility tape
- Bull bar
- Seat covers
- Vehicle stability control
- Light Rigid Licence Required



# FLATBED TRUCKS



Designed for secure and efficient haulage, our flat bed trucks provide flexible transport options with a range of GVMs and tray configurations to suit your load.

● Safer Together Compliant

● Light Vehicle Project Spec

● Heavy Vehicle Project Spec



HINO 500

## 4X2 FLATBED

- 7t Payload
- 8m Tray
- Automatic Transmission
- Medium Rigid Licence Required



HINO 817

## 4X4 SINGLE CAB FLATBED TRUCK

- GVM<sup>1</sup> Of 7,500 Kg
- Light Rigid Licence Required



ISUZU FSS

## 4X4 SINGLE CAB FLATBED TRUCK

- GVM<sup>1</sup> Of 10,000 Kg
- 4.5m Tray
- Medium Rigid Licence Required



HINO GT

## 4X4 SINGLE CAB FLATBED TRUCK

- GVM<sup>1</sup> Of 14,500 Kg
- 6m Tray
- 7t Payload
- Automatic Transmission
- Medium Rigid Licence Required



HINO

## 6X4 SINGLE CAB FLATBED TRUCK

- GVM<sup>1</sup> Of 23,000 Kg
- 8m Tray
- Automatic Transmission
- Heavy Rigid Licence Required



# FITTERS TRUCKS



Purpose-engineered for field servicing, CST Hire's fitters trucks come equipped with toolboxes, compressors, cranes, and mine-spec safety features to keep your assets operational in the most remote locations.



## 4X4 SINGLE CAB FITTERS TRUCK

- 3 Seats
- GVM<sup>1</sup> Of 7,500 Kg – Hino 817
- Toolboxes
- Compressor
- Small Rear Mounted Crane
- Light Rigid Licence Required

# CREW TRUCKS

Our crew trucks are project and mine-spec compliant, offering safe, spacious transport for work teams with seating for up to seven and configurations to suit light or medium rigid licence classes.



Isuzu N / Hino 300

## 4X2 CREW CAB TRUCK

- 7 Seats
- GVM<sup>1</sup> Of 4,490 Kg
- Car Licence Required



Isuzu NPS / Hino 817

## 4X4 CREW CAB TRUCK

- 7 Seats
- GVM<sup>1</sup> Of 7,500 Kg
- Light Rigid Licence Required

# CRANE TRUCKS



Our crane trucks are fitted with industry-trusted lifting solutions, combining strength, reach, and compliance for materials handling on critical worksites.

● Safer Together Compliant

● Light Vehicle Project Spec

● Heavy Vehicle Project Spec



ISUZU



ISUZU FTS



HINO GT



HINO

## 4X2 FRONT MOUNT CRANE TRUCK

- GVM<sup>1</sup> Of 15,000 Kg
- 8m Tray – 6t Payload
- Automatic Transmission
- Medium Rigid Licence Required

### Ferrari 7103 Crane Specifications ● ●

Lifting Capacity	At Length
1.9t	4.3 m
1,255 Kg	6 m
900 Kg	8 m
580 Kg	10 m

## 4X4 FRONT MOUNT CRANE TRUCK

- GVM<sup>1</sup> Of 14,500 Kg
- 6m Tray – 5t Payload
- ROPS<sup>2</sup>
- Automatic Transmission
- Medium Rigid Licence Required

### HMF 910 K3 Crane Specifications ● ●

Lifting Capacity	At Length
1,925 Kg	3.8 m
1,265 Kg	5.6 m
725 Kg	9 m

## 6X4 FRONT MOUNT CRANE TRUCK

- GVM<sup>1</sup> Of 23,000 Kg
- 8m Tray – 10t Payload
- ROPS<sup>2</sup>
- Automatic Transmission
- Heavy Rigid Licence Required

### HMF 1320 K3 Crane Specifications ● ●

Lifting Capacity	At Length
2.7t	4.3 m
1,810 Kg	6 m
1,320 Kg	8 m
1 t	10 m

### Ferrari 7103 Crane Specifications

Lifting Capacity	At Length
1.9t	4.3 m
1,255 Kg	6 m
900 Kg	8 m
580 Kg	10 m

### Ferrari 7125 Crane Specifications

Lifting Capacity	At Length
2.5t	4.2 m
1,650 Kg	6 m
1,200 Kg	8 m
950 Kg	10 m





UD

## 6X4 REAR MOUNT CRANE TRUCK

- GVM<sup>1</sup> Of 23,000 Kg
- 8m Tray – 10t Payload
- ROPS<sup>2</sup>
- Automatic Transmission
- Heavy Rigid Licence Required

### Ferrari 718 Crane Specifications

Lifting Capacity	At Length
3,305 Kg	5 m
1,590 Kg	8 m
995 Kg	13 m
845 Kg	13 m



ISUZU FTS

## 8X4 FRONT MOUNT CRANE TRUCK

- GVM<sup>1</sup> Of 27,500 Kg
- 8m Tray – 12t Payload
- ROPS<sup>2</sup>
- Heavy Rigid Licence Required

### Ferrari 7183 Crane Specifications

Lifting Capacity	At Length
3.7t	4.6 m
2.5t	6.5 m
2t	8 m
1t	12 m



HINO GT

## 8X4 REAR MOUNT CRANE TRUCK

- GVM<sup>1</sup> Of 27,500 Kg
- 6.3m Tray – 12t Payload
- ROPS<sup>2</sup>
- Automatic Transmission
- Heavy Rigid Licence Required

### Palfinger PK33002 D Crane Specifications

Lifting Capacity	At Length
6.6t	4 m
4.3t	6 m
3.2t	8 m
2.4t	10 m
1.6t	14 m



# CRANE TRUCKS



Our crane trucks are fitted with industry-trusted lifting solutions, combining strength, reach, and compliance for materials handling on critical worksites.

● Safer Together Compliant

● Light Vehicle Project Spec

● Heavy Vehicle Project Spec



UD

## 8X4 REAR MOUNT CRANE TRUCK

- GVM<sup>1</sup> Of 27,500 Kg
- 7m Tray – 12t Payload
- ROPS<sup>2</sup>
- Automatic Transmission
- Heavy Rigid Licence Required

### Ferrari 726 Crane Specifications ● ●

Lifting Capacity	At Length
5.3t	4 m
3.5t	6 m
2.6t	8 m
1.6t	12 m

### HMF 3320 Crane Specifications

Lifting Capacity	At Length
5.3t	4 m
3.5t	6 m
2.6t	8 m
2.2t	10 m
1.8t	12 m



Tatra Phoenix

## 8X8 REAR MOUNT CRANE TRUCK

- GVM<sup>1</sup> Of 27,000 Kg
- 7m Tray
- Payload On Road: 5t
- Payload Off Road: 20t
- ROPS<sup>2</sup>
- Automatic Transmission
- Heavy Rigid Licence Required

### HMF 2820 Crane Specifications ● ●

Lifting Capacity	At Length
5t	4 m
3.6t	6 m
2.8t	8 m
1.8t	12 m



ASTRA

## 8X8 REAR MOUNT CRANE TRUCK

- GVM<sup>1</sup> Off Road: 43.8t
- GVM<sup>1</sup> On Road: 27t
- 6.3m Tray
- Payload On Road: 4t
- Payload Off Road: 22t
- ROPS<sup>2</sup>
- Automatic Transmission
- Heavy Rigid Licence Required

### Palfinger PK33002-D Crane Specifications ● ●

Lifting Capacity	At Length
6.6t	4 m
4.3t	6 m
3.2t	8 m
2.4t	10 m
1.6t	14 m

# CRANE / TILT TRUCK COMBOS



Dual-function trucks combining lift-and-load capability for maximum site efficiency.



Safer Together Compliant



Light Vehicle Project Spec



Heavy Vehicle Project Spec



FUSO

HINO

## 6X4 CRANE / TILT TRAY TRUCK

- GVM<sup>1</sup> Of 23,000 Kg
- 7m Tray - 9t Payload
- ROPS<sup>2</sup>
- Automatic Transmission
- Heavy Rigid Licence Required

### Palfinger PK12.501 Crane Specifications

Lifting Capacity	At Length
2,900 Kg	3.8 m
1,920 Kg	5.7 m
1,440 Kg	7.6 m



UD Quon

ISUZU

## 8X4 CRANE / TILT TRAY TRUCK

- GVM<sup>1</sup> Of 27,500 Kg
- 7.5m Tray – 10t Payload
- ROPS<sup>2</sup>
- Automatic Transmission
- Heavy Rigid Licence Required

### Ferrari 7183 Crane Specifications

Lifting Capacity	At Length
3.7t	4.6 m
2.5t	6.5 m
2t	8 m
1t	12 m

### Palfinger PK19001 SLD5 Crane Specifications

Lifting Capacity	At Length
4.1t	4 m
2.6t	6.5 m
2t	8 m
1.2t	12 m



Fuso Shogun

## 8X4 CRANE / TILT TRAY TRUCK

- GVM<sup>1</sup> Of 27,500 Kg
- 7m Tray – 10t Payload
- Automatic Transmission
- Heavy Rigid Licence Required

### Palfinger PK18002 Crane Specifications

Lifting Capacity	At Length
4t	4 m
2.6t	6 m
1.9t	8 m
1.5t	10 m

# FUEL TRUCKS



Delivering efficient on-site refuelling, our robust fuel trucks are ROPS-certified and equipped with Hi/Lo<sup>3</sup> flow hoses to support round-the-clock project activity.

● Safer Together Compliant

● Light Vehicle Project Spec

● Heavy Vehicle Project Spec



ISUZU

## 4X4 FUEL TRUCK

- 5,000 L Tank
- Hi/Lo<sup>3</sup> Flow Hoses
- ROPS<sup>2</sup>
- Medium Rigid Licence Required



ISUZU

## 4X4 FUEL TRUCK

- 6,000 L Tank
- Hi/Lo<sup>3</sup> Flow Hoses
- ROPS<sup>2</sup>
- Medium Rigid Licence Required



HINO

## 6X4 FUEL TRUCK

- 11,000 L Fuel Tank
- AdBlue
- ROPS<sup>2</sup>
- Heavy Rigid Licence Required



VOLVO

## 6X6 FUEL TRUCK

- 12,000 L Tank
- AdBlue
- ROPS<sup>2</sup>
- Automatic Transmission
- Heavy Rigid Licence Required





# SERVICE TRUCKS



Engineered for remote maintenance and fluid management, our service trucks offer full mine-spec setups with toolboxes, oil storage, compressors, and more.

● Safer Together Compliant

● Light Vehicle Project Spec

● Heavy Vehicle Project Spec



ISUZU

## 6X4 SERVICE TRUCK

- 8,000 L Fuel Tank + 3 Oils
- Coolant & Evacuated Waste + Bulk Grease
- ROPS<sup>2</sup>
- Heavy Rigid Licence Required



HINO

## 6X4 SERVICE TRUCK

- 9,000 L Fuel Tank + 3 Oils
- AdBlue
- Coolant & Evacuated Waste + Bulk Grease
- ROPS<sup>2</sup>
- Heavy Rigid Licence Required



VOLVO FMX

## 8X4 SERVICE TRUCK

- 12,000 L Fuel Tank + 3 Oils
- Coolant & Evacuated Waste + Bulk Grease + AdBlue Tank
- ROPS<sup>2</sup>
- Heavy Rigid Licence Required



# TILT TRAYS



Ideal for machinery relocation and vehicle recovery, our tilt trays are engineered for safe, self-loading transport across diverse job sites.

● Safer Together Compliant

● Light Vehicle Project Spec

● Heavy Vehicle Project Spec



HINO 500

## 4X2 TILT TRAY

- 8m Tray
- 6t Payload
- Automatic Transmission
- Medium Rigid Licence Required



HINO 500

## 6X4 TILT TRAY

- 8.5m Tray
- 10t Payload
- Automatic Transmission
- ROPS<sup>2</sup>
- Stability Control Fitted
- Heavy Rigid Licence Required



ISUZU

## 8X4 TILT TRAY TRUCK

- 8m Tray
- GVM<sup>1</sup> Of 27,500 Kg
- 12t Payload
- ROPS<sup>2</sup>
- Automatic Transmission
- Heavy Rigid Licence Required



# TIPPERS



Built for tough loads, CST Hire's tipper trucks offer heavy-duty capacity and controlled tipping—backed by full project compliance and site readiness.

● Safer Together Compliant

● Light Vehicle Project Spec

● Heavy Vehicle Project Spec



HINO 500

## 4X2 CREW CAB TIPPER TRUCK

- 7 Seats
- GVM<sup>1</sup> Of 6,500 Kg
- Light Rigid Licence Required



HINO

## 4X2 SINGLE CAB TIPPER TRUCK

- 3 Seats
- GVM<sup>1</sup> Of 6,500 Kg
- Light Rigid Licence Required



HINO 817

ISUZU NPS

## 4X4 CREW CAB TIPPER TRUCK

- 7 Seats
- GVM<sup>1</sup> Of 7,500 Kg
- Stability Control Fitted
- Light Rigid Licence Required



HINO

## 6X4 TIPPER TRUCK

- 3 Seats
- GVM<sup>1</sup> Of 23,000 Kg
- 10m<sup>3</sup>
- Automatic Transmission
- Heavy Rigid Licence Required



HINO

## 6X4 TIPPER TRUCK

- 3 Seats
- GVM<sup>1</sup> Of 23,000 Kg
- 12m<sup>3</sup>
- Automatic Transmission
- Heavy Rigid Licence Required



# WATER TRUCKS



Our poly and steel tank water trucks feature cannon and spray bar configurations to meet dust suppression and environmental control standards on-site.

● Safer Together Compliant

● Light Vehicle Project Spec

● Heavy Vehicle Project Spec



HINO

## 4X2 WATER TRUCK

- 8,000 L Poly Tank
- Safe Fill 7000 L
- Rear Spray Bars
- Cannon
- Medium Rigid Licence Required



HINO

## 6X4 WATER TRUCK

- 14,000 L Poly Tank
- Safe Fill 10,000 L
- Rear Spray Bars
- Cannon
- Heavy Rigid Licence Required



UD

## 6X4 WATER TRUCK

- 14,000 L Poly Tank
- Safe Fill 10,000 L
- ROPS<sup>2</sup>
- Rear Spray Bars
- Cannon
- Automatic Transmission
- Heavy Rigid Licence Required





ISUZU

## 8X4 WATER TRUCK

- 18,000 L Tank
- Safe Fill 12,000 L
- Rear Spray Bars & Cannon
- ROPS<sup>2</sup>
- Automatic Transmission
- Heavy Rigid Licence Required



UD

## 8X4 WATER TRUCK

- 20,000 L Tank
- Safe Fill 12,000 L
- Rear Spray Bars & Cannon
- ROPS<sup>2</sup>
- Automatic Transmission
- Heavy Rigid Licence Required



UD

## WATER TANKER & PRIME MOVER

- 30,000 L Tank
- Safe Fill 18,000 L
- Automatic Transmission
- Heavy Combination Licence  
Licence Required

# EQUIPMENT & TRAINING

At CStHire, we prioritise both the reliability of our equipment and the readiness of our team. Every unit is supported by rigorous standards and practical training to ensure safe and efficient operation on site.

All fleet and consumable products supplied by CStHire meet Australian and International Standards.



We provide product familiarisation training for all our fleet: crane, water, fuel, tilt tray, and service modules.

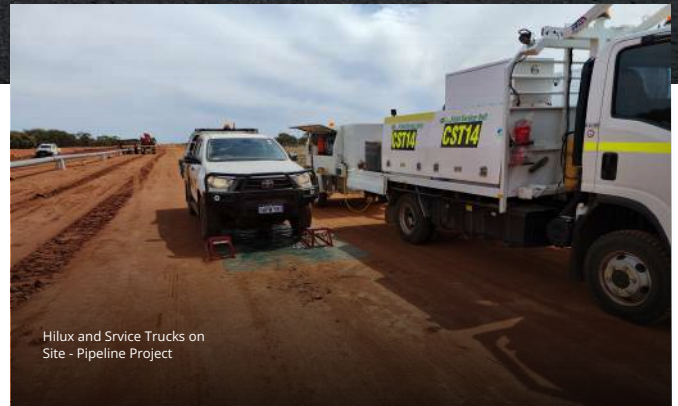


## EQUIPMENT USAGE ON SITE

All equipment is maintained to high standards ensuring the equipment is project-ready.



8x4 Water Truck  
with ROPS



Hilux and Service Trucks on  
Site - Pipeline Project



# WORKPLACE HEALTH & SAFETY MANAGEMENT

CSThire aims for a zero injury or harm record.

- Ongoing training and regular toolbox meetings to ensure employees enjoy a safe working environment.
- CSThire is an equal opportunity employer and strives to be an employer of choice. Our workshop mechanics are fully trained, with many years of combined experience and our carefully selected apprentices receive closely supervised training.
- An unwavering focus on improving safety in the workplace.
- Actively encouraging a proactive approach through verbal and written feedback, and a genuine sense of responsibility, from team members and contractors, both internally and externally in any matter relating to safety.
- A strong culture of zero harm in the workplace.

## ISO CERTIFICATIONS

CSThire is certified in ISO 9001 (Quality), ISO 45001 (Occupational Health & Safety), and ISO 14001 (Environmental Management), demonstrating its commitment to excellence, safety, and sustainability across operations.



# VEHICLE SPECIFICATIONS

## LIGHT VEHICLE

### Project Spec Standard Inclusions:

- Hi Visibility Tape
- Bull Bar
- UHF (Ultra High Frequency) Radio
- Flashing Beacon
- Elevated Lights
- Wheel Nut Indicators
- Tow Bar 3.5t
- Day Time Running Lights
- Battery Isolator
- Reverse Alarm
- First Aid Kit
- Fire Extinguisher
- Canvas Seat Covers

### Options Available on Request:

- IVMS (In-Vehicle Monitoring System)
- VHF (Very High Frequency) Radio
- Mine Flag – no charge
- BMA (BHP Mitsubishi Alliance) Spec & Compliance
- Guardian Systems

## HEAVY VEHICLE

### Project Spec Standard Inclusions:

- Hi Visibility Tape
- UHF (Ultra High Frequency) Radio
- Flashing Beacon
- Elevated Lights
- Wheel Nut Indicators
- ROPS (Roll Over Protection System)
- Battery Isolators
- Reverse Alarm
- First Aid Kit
- Fire Extinguisher
- E-Stops (Emergency Stops)
- Canvas Seat Covers

### Options Available on Request:

- IVMS (In-Vehicle Monitoring System)
- VHF (Very High Frequency) Radio
- Mine Flag – no charge
- BMA (BHP Mitsubishi Alliance) Spec & Compliance
- Guardian Systems
- State Specific Requirements:
  - Left-Hand Turn Alarm

## SAFER TOGETHER SPEC HV REV 3

### Safer Together Spec Inclusions Above Our Standard Project Spec Inclusions

- IVMS (In-Vehicle Monitoring System)
- Electronic Stability Control
- ABS (Anti-lock Braking System) Brakes
- Park Brake Alarm
- Day Time Running Lights
- Side Under-Run Protection If Required

### Additional items available upon request

\*ROPS (Roll Over Protection System) available on most truck types

## TERM GLOSSARY

1. GVM (Gross Vehicle Mass) – Max weight of vehicle plus load.
2. ROPS (Roll Over Protection System) – Safety frame for rollover protection.
3. Hi/Lo (High/Low) – Refers to selectable high and low hydraulic flow settings.

## UNITS OF MEASUREMENT

- Kg (Kilograms) – Unit of weight.
- L (Litres) – Unit of liquid volume.
- m (Metres) – Unit of length.
- m<sup>3</sup> (Cubic Metres) – Unit of volume.
- t (Tonnes) – 1,000 kilograms.



# IVMS IN VEHICLE MONITORING SYSTEM

**Keep your Workers Safe, and your eyes on the road**

Track your whole fleet onsite at the push of a button with real time live tracking.



CST Hire vehicles have In Vehicle Monitoring Systems fitted as Standard, with options of Iridium Satellite network for working in remote area, duress buttons, driver monitoring and driver vibration alert systems, geo fencing, vehicle health and driver ID.

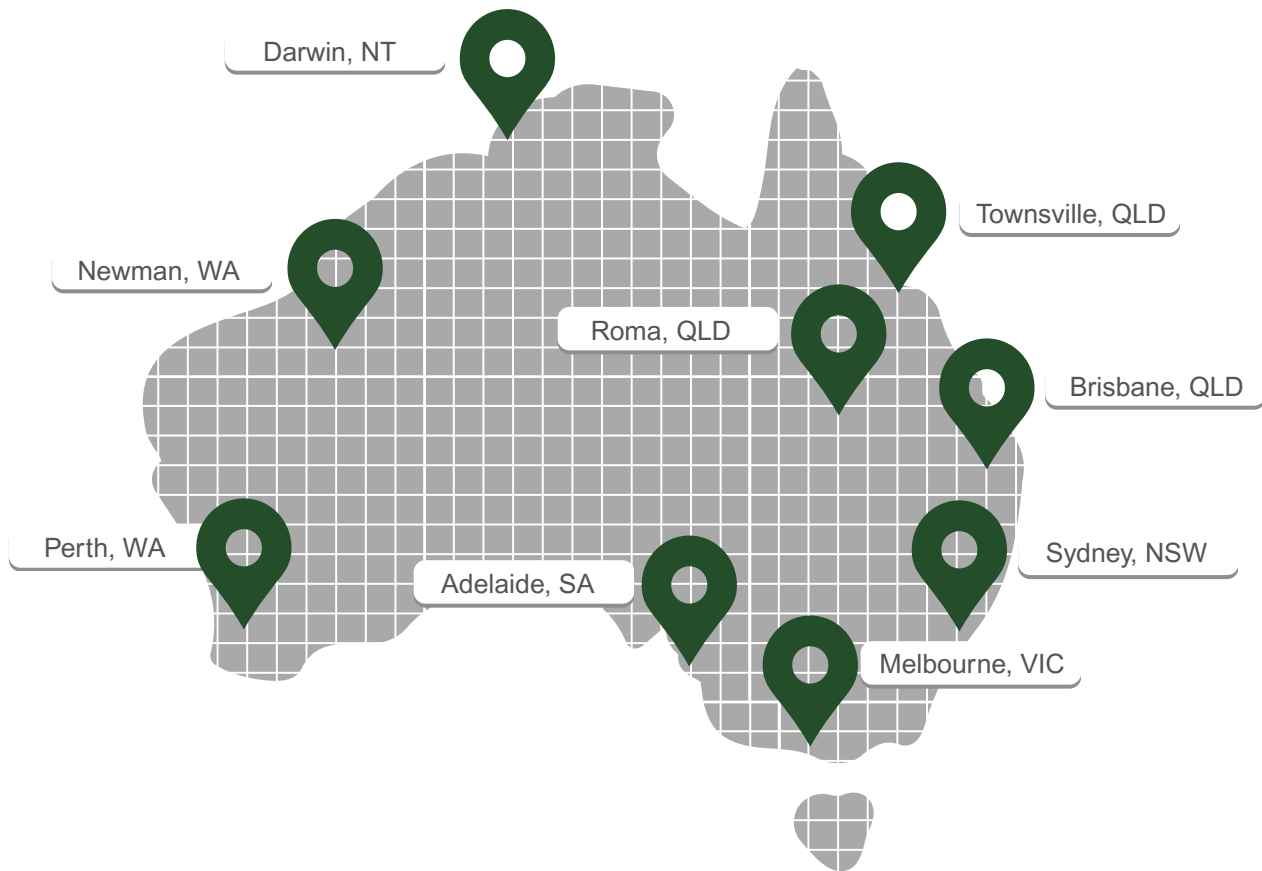


## DRIVER FATIGUE MANAGEMENT

Drowsiness Detection System: Monitors driver alertness and provides real-time alerts to prevent accidents caused by fatigue.  
Driver Fatigue Management System: Helps manage and mitigate driver fatigue, ensuring that drivers are well-rested and alert on the road.



# OUR CURRENT LOCATIONS



CST Hire operates with a national fleet coverage, ensuring reliable and efficient service for projects across Australia. With strategically located hubs, we provide timely fleet delivery and support, helping you keep your project on schedule, no matter the location.

## SOME OF THE INDUSTRIES WE SERVICE





